

iCover

Peripheral balloon expandable
PTFE covered stent system

Designed to
cover all needs



www.ivascular.global

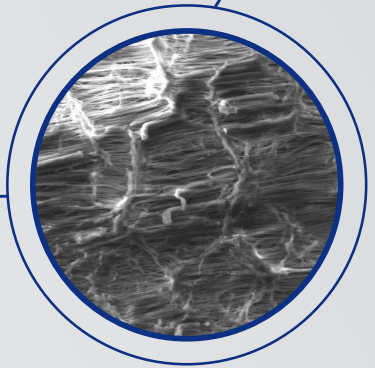
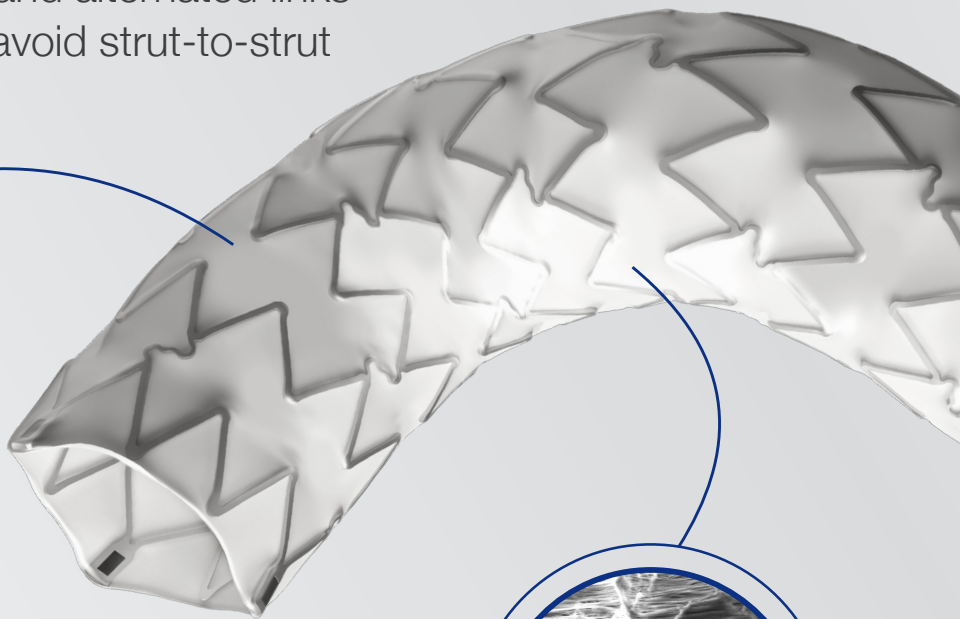
iVascular[®]
therapies for living

Able to treat the most tortuous arteries

- **ePTFE covered stent with high flexibility**

Due to:

- Open cell design and alternated links
- Nested peaks to avoid strut-to-strut contact



Best in class post-expansion capacity ($\geq 2\text{mm}$)

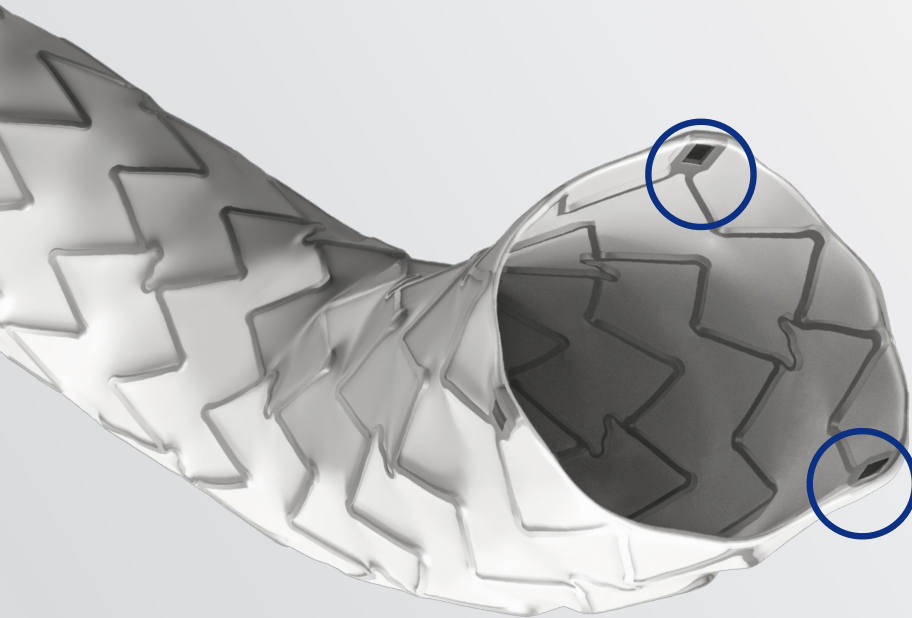
High ePTFE porosity to ensure covered stent post-expansion capacity

iCover

Designed to cover all needs

Enhanced visibility

Unique stent with radiopaque markers to facilitate the implantation and the post-dilation



		MAXIMUM POST DILATATION DIAMETERS					
STENT DIMENSIONS		STENT DIAMETERS (mm)					
		5	6	7	8	9	10
STENT LENGTH (mm)	17	≤10mm				≤12mm	
	27						
	37						
	57						

Excellent navigability and easy to implant

Outstanding flexibility

of the stent crimped, avoiding the kinking during navigation



• Crimped on Oceanus 35 PTA balloon, offering:

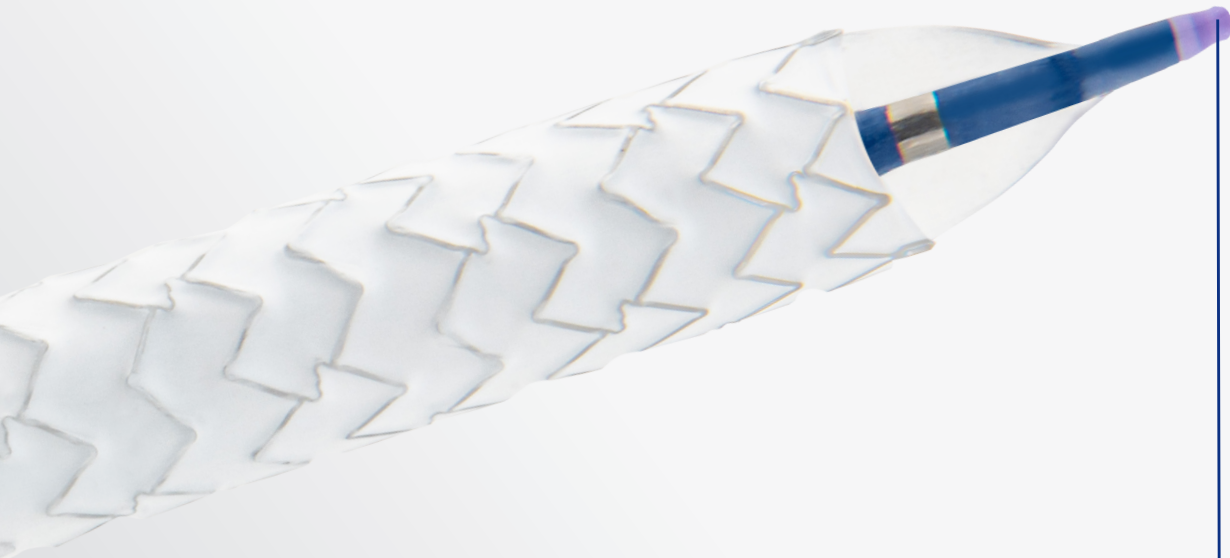
- Best deflation times (7s)**
- Good pushability and trackability

* 6F up to 8x17 mm and 7F from 8x27mm up to 10 mm.

** iVascular internal data

iCover

Designed to cover all needs



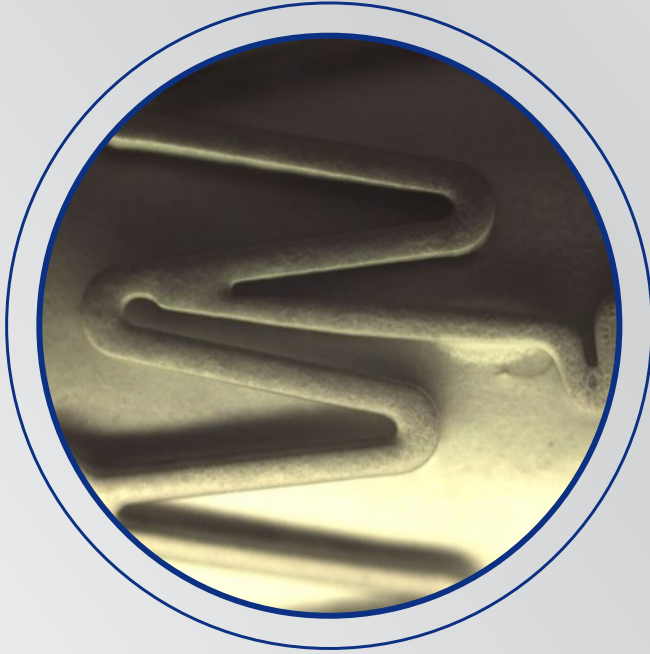
Small profiles:

6F introducer compatibility up to 8mm*

INTRODUCER COMPATIBILITIES

STENT DIMENSIONS		STENT DIAMETERS (mm)						
		5	6	7	8	9	10	
STENT LENGTH (mm)	17	6F				7F		
	27							
	37							
	57							

iVascular proprietary encapsulation technology



Encapsulation technology

iCover is a stent
completely encapsulated
with 2 ePTFE layers



Proprietary technology to encapsulate the stent
into an inner and outer ePTFE

**Ensures a complete
encapsulation avoiding
delamination**

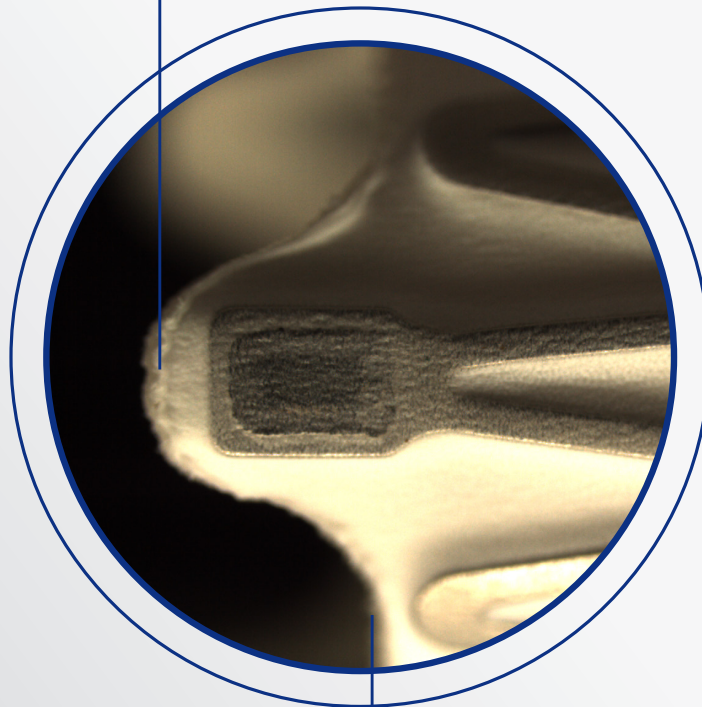
iCover

Designed to cover all needs



Specific ePTFE laser cutting technology

- Perfect sealing



The laser follows the stent outline while cutting the contour

iCover features

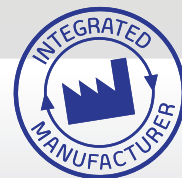
- > Over the wire catheter (OTW)
- > Guidewire compatibility: **0.035"**
- > Catheter length: **80** and **140** cm
- > NP: 9 atm
- > RBP:
 - Ø 5-7mm: 15 atm
 - Ø 8mm: 14 atm
 - Ø 9-10mm: 13 atm
- > Maximum post expansion:
 - Ø 5-8mm ≤ 10mm
 - Ø 9-10mm ≤ 12mm
- > CoverTech encapsulation technology
- > Introducer compatibility **6F** (up to Ø8mm, L 17mm), **7F**
- > **3 radiopaque markers** at each stent end
- > Stent material: CoCr L605
- > Graft material: ePTFE
- > Recoil: ≤ 10 %
- > Shortening:
 - Length 17mm: ≤ 12 %
 - Length 57mm: ≤ 8 %

Product with CE mark, certified by Notified Body 0318

Effective catheter length (cm)	Stent diameter (mm)	Stent length (mm)			
		17	27	37	57
80	5	SPCBCC35080050017	SPCBCC35080050027	SPCBCC35080050037	SPCBCC35080050057
	6	SPCBCC35080060017	SPCBCC35080060027	SPCBCC35080060037	SPCBCC35080060057
	7	SPCBCC35080070017	SPCBCC35080070027	SPCBCC35080070037	SPCBCC35080070057
	8	SPCBCC35080080017	SPCBCC35080080027	SPCBCC35080080037	SPCBCC35080080057
	9		SPCBCC35080090027	SPCBCC35080090037	SPCBCC35080090057
	10		SPCBCC35080100027	SPCBCC35080100037	SPCBCC35080100057
140	5	SPCBCC35140050017	SPCBCC35140050027	SPCBCC35140050037	SPCBCC35140050057
	6	SPCBCC35140060017	SPCBCC35140060027	SPCBCC35140060037	SPCBCC35140060057
	7	SPCBCC35140070017	SPCBCC35140070027	SPCBCC35140070037	SPCBCC35140070057
	8	SPCBCC35140080017	SPCBCC35140080027	SPCBCC35140080037	SPCBCC35140080057
	9		SPCBCC35140090027	SPCBCC35140090037	SPCBCC35140090057
	10		SPCBCC35140100027	SPCBCC35140100037	SPCBCC35140100057

- Introducer compatibility: **6F**
- Introducer compatibility: **7F**

Distributed by:



Manufactured by:
Life Vascular Devices Biotech, S.L
www.ivascular.global
info@ivascular.global