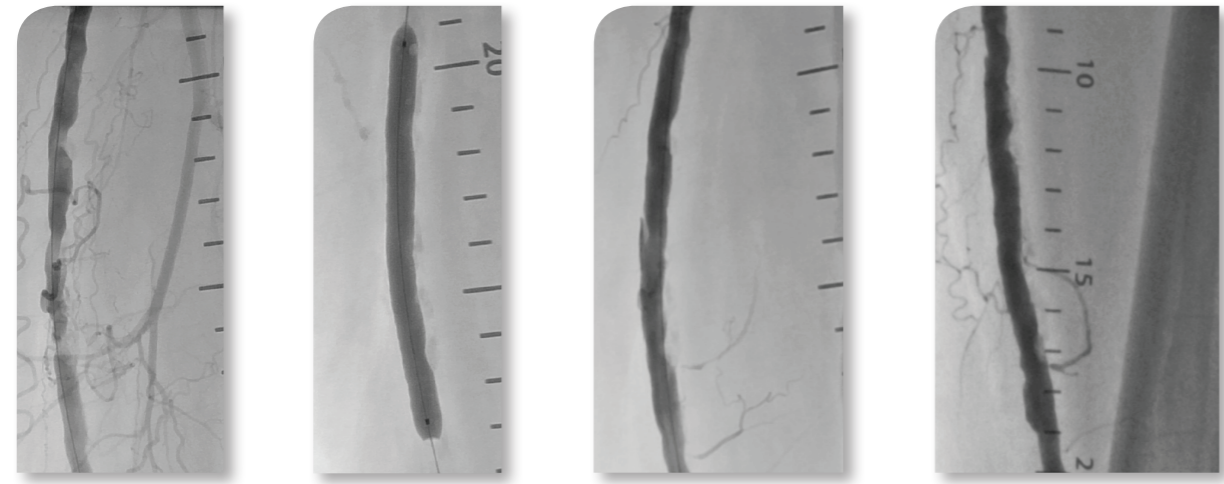


<p>Platform Chocolate – unique pillows & grooves; low trauma</p>	<p>Drug Paclitaxel – 3 µg/mm² in crystalline form</p>	<p>Excipient Hydrophilic spacer to facilitate paclitaxel uptake during inflation</p>	<p>Clinical evidence ENDURE – no flow limiting dissections, 0.16 late lumen loss at 6 mo.</p>	<p>Indications Peripheral – one step device, pre-dilatation not required</p>
---	---	---	--	---



Pre-Intervention Inflated Chocolate Touch Post Chocolate Touch 6 Month Follow-up

ENDURE case from Prof. Thomas Zeller
Universitäts-Herzzentrum Freiburg-Bad Krozingen GmbH, Bad Krozingen, Germany.

¹ Chocolate BAR interim results.
² Predictable: less dissection and less bailout stenting.
³ ENDURE interim results.
⁴ Cadaver data on file at TriReme Medical, LLC.
⁵ Core lab adjudicated data.
⁶ Post Chocolate Touch inflation assessments could not be completed in one patient, per protocol, stent was permitted with flow-limiting dissection or >50% stenosis.
⁷ Based upon Duplex Ultrasound Review by the DUS Corelab (Vascore, Boston MA). Study follow-up and data review is ongoing.
⁸ Patients treated per protocol.
⁹ Based upon Angiogram QVA analysis by the QVA Corelab (Yale University, New Haven, CT).
¹⁰ At nominal pressure.

See IFU for more information



Manufactured and Distributed by:
TriReme Medical LLC.
7060 Koll Center Parkway, Suite 300
Pleasanton, California 94566 USA
Toll Free: +1 888 553 8555
Fax: +1 925 931 1363
Tel: +1 925 931 1300

MPS Medical Product Service GmbH
Borngasse 20
D-35619 Braunfels, Germany
Tel: +49 6442 962073

info@trirememedical.com
www.trirememedical.com



Chocolate Touch[®]

Changing the Landscape of Drug-Coated Balloons

- Chocolate platform for controlled inflation
- Paclitaxel coating for improved long term results
- One step device

Chocolate Touch is the first and only balloon that combines the acute benefits of the Chocolate platform with the sustained long-term effect of paclitaxel.

The pillows and grooves of the Chocolate® platform were designed to minimize vessel wall trauma. This unique platform has been demonstrated to reduce flow limiting dissections and bail-out stenting¹. Chocolate Touch is coated with the drug paclitaxel for improved long-term outcomes. It is indicated to treat peripheral vascular disease and does not require pre-dilatation.



Acute benefits of controlled inflation with the Chocolate platform

Predictable luminal gain with unique pillows and grooves design^{1, 2, 3}

Reduced dog-boning and edge injury with uniform inflation⁴

Demonstrated low rates of dissection and bail out stenting^{1, 3}

ENDURE Procedural Outcomes⁵ (N=70)

Flow Limiting Dissections	0% (0/69) ⁶
>50% Diameter Stenosis	1.4% (1/69) ⁶
Bail-out Stenting	1.4% (1/69) ⁶

The ENDURE study did not require pre-dilatation.

“ In the ENDURE study, Chocolate Touch achieved a low residual diameter stenosis (similar to stents) and no flow limiting dissections, resulting in a very low rate of per-protocol bail-out stenting. It also showed high patency and an impressively low late lumen loss at 6 months. ”

Prof. Thomas Zeller
Co-PI of the ENDURE study
Universitäts-Herzzentrum Freiburg-Bad Krozingen GmbH
Bad Krozingen, Germany

Long term benefits of paclitaxel coating

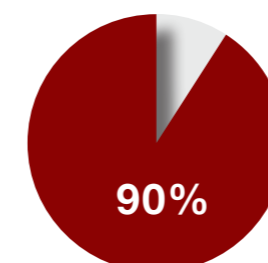
- Anti-proliferative agent, clinically proven to inhibit neointimal hyperplasia
- 3 µg/mm² paclitaxel dose
- Crystalline paclitaxel coating with hydrophilic excipient, developed in collaboration with InnoRa GmbH

The unique constraining structure of Chocolate Touch covers the drug-coated balloon during delivery and forms pillows upon inflation.

The pillows and grooves of the inflated Chocolate Touch balloon result in 20% more drug-coated surface compared to conventional balloons of the same size¹⁰.

ENDURE Results at 6 months

Patency (N=50):^{7, 8}



Late Lumen Loss (N=49):⁹

Mean	0.16
Std Dev	±0.72