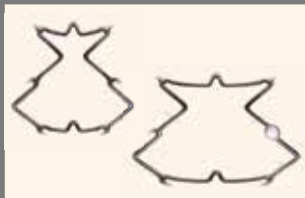


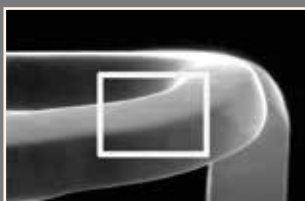
# Radix2

## RENAL BALLOON EXPANDABLE STENT

Radix2 is a stent with a progressive multicellular design for treatment of the renal artery.



- Excellent scaffolding proximally and good flexibility distally thanks to the unique progressive closed cell design



- Proven biocompatibility enabled by the Carbofilm™ coating, accelerating the rate of endothelization and strut coverage, reducing thrombogenicity



- Platinum markers and no stent foreshortening design allow unmatched placement accuracy and visualization

### TECHNICAL DATA

PERIPHERAL STENT	
Stent diameters:	5 - 7 mm
Stent lengths:	12 & 17 mm
Stent material:	Stainless steel AISI 316 LVM
Strut thickness:	175 µm
Strut surface coating:	Carbofilm™
2 platinum radiopaque markers at stent ends	
No stent foreshortening upon expansion	
DEVICE SPECIFICATIONS	
Rapid Exchange (RX)	
Introducer sheath compatibility:	5F
Guiding catheter compatibility:	6F
Guidewire compatibility:	0.018"
Usable Catheter Length - UCL:	75 & 150 cm
Nominal Pressure:	7 - 8 atm
Rated Burst Pressure:	15 atm

# Radix2

## RENAL BALLOON EXPANDABLE STENT

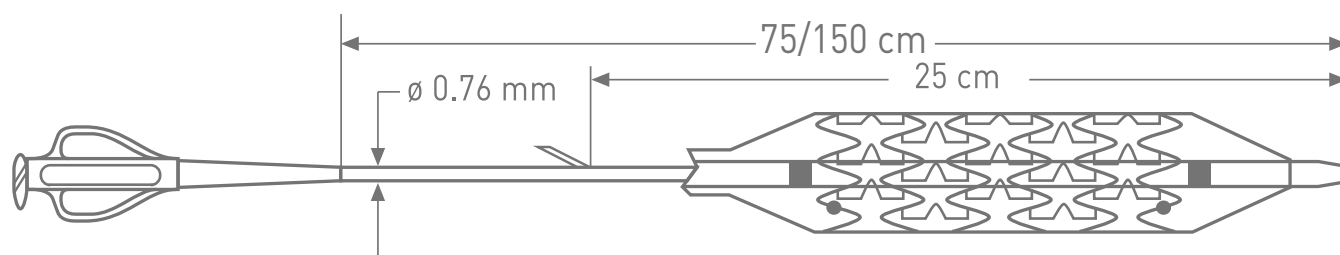
### ORDER INFORMATION RADIX2

#### USABLE CATHETER LENGTH 75 CM

∅ (mm) \ L (mm)	12	17
5.00	ICRW5012S	ICRW5017S
6.00	ICRW6012S	ICRW6017S
7.00	ICRW7012S	ICRW7017S

#### USABLE CATHETER LENGTH 150 CM

∅ (mm) \ L (mm)	12	17
5.00	ICRW5012L	ICRW5017L
6.00	ICRW6012L	ICRW6017L
7.00	ICRW7012L	ICRW7017L



[www.alvimedica.com](http://www.alvimedica.com)

Please contact your local sales representative for product availability.

Not for sale in the USA and Japan.

The images shown within this document are of a purely illustrative nature and are not intended to depict reality.

Please consult product labels and package inserts for indications, contraindications, hazards, warnings, cautions and instruction for use.

Manufactured by: CID S.p.a., Strada per Crescentino, sn - 13040 Saluggia (VC) Italy

©2018, Alvimedica. All Rights Reserved.